

# Quick Start Guide

*This guide directs you to the instructions for installing IBM Spectrum MPI Version 10.2.0*

## Product overview

IBM Spectrum™ MPI is a complete MPI implementation, based on the Open MPI open source project, and is designed to comply with all the requirements of the Message Passing Interface standard, MPI: A Message-Passing Interface Standard, Version 3.1, University of Tennessee, Knoxville, Tennessee, June 4, 2015.


## 1 Step 1: Access the software and documentation

 This product offering consists of IBM Spectrum MPI Version 10.2.0.

**To obtain the IBM Spectrum MPI product:** You can access IBM Spectrum MPI from the product media, or download it from the Passport Advantage® website.

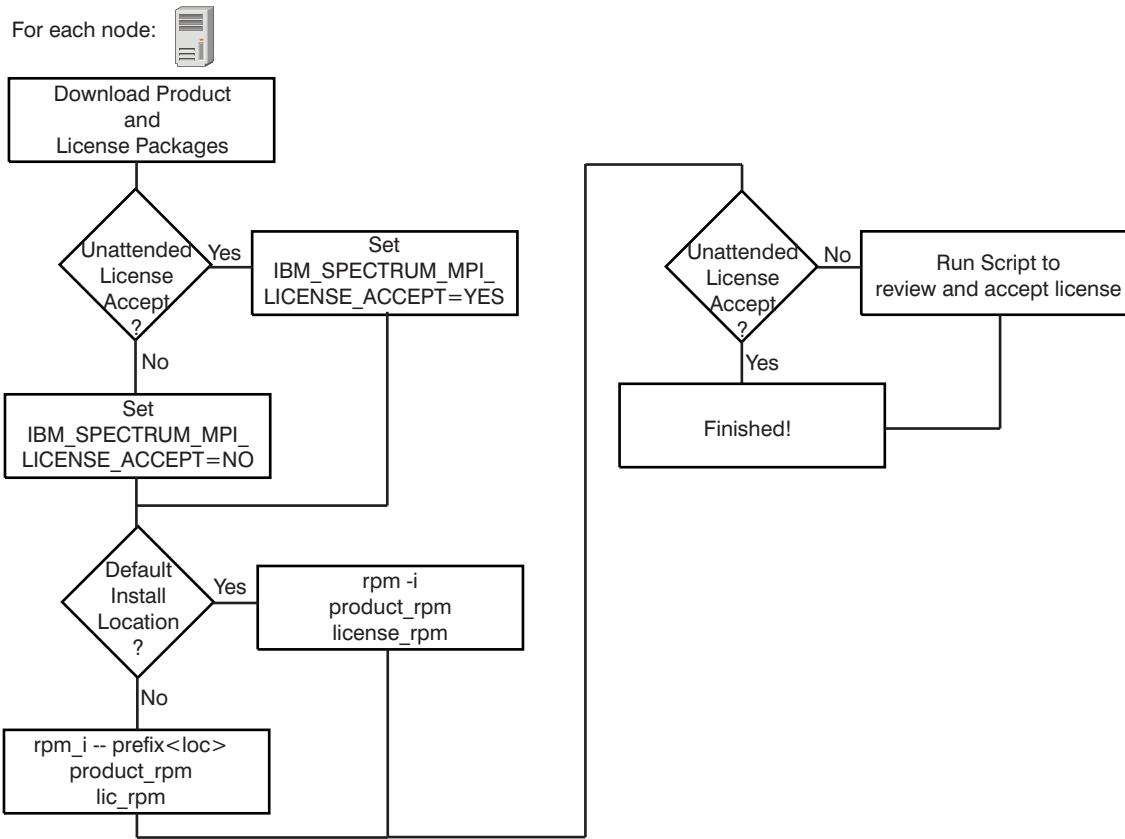
If you choose to download IBM Spectrum MPI from Passport Advantage, follow the instructions on the IBM Support website.

## 2 Step 2: Evaluate the hardware and system configuration

 Review the IBM Spectrum MPI versions and operating system versions that are supported and verify that they are compatible with the software levels you use. For information about IBM Spectrum MPI hardware and system requirements, see the IBM Spectrum MPI installation requirements topic in the Knowledge Center.

## 3 Step 3: Review the installation architecture

The following diagram illustrates the high-level architecture of IBM Spectrum MPI.



## 4 Step 4: Installing IBM Spectrum MPI



Step 1: Obtain software packages.

Step 2: You must have root authority to install the package.

Step 3: Install RPMs and accept the license packages.

1. You must install and accept the IBM Spectrum MPI agreement on each node of a cluster in order to successfully install IBM Spectrum MPI. The IBM Spectrum MPI license must be installed either before you install the IBM Spectrum MPI component base RPM, or at the same time. See the following instructions for installing the packages concurrently:
  - a. Select the appropriate RPMs for the platform you are using.
  - b. Login as root.
  - c. Determine how the IBM Spectrum MPI license will be processed. For unattended installation, the license may be accepted automatically when the license RPM is installed as follows:
    - set the environment variable **IBM\_SPECTRUM\_MPI\_LICENSE\_ACCEPT=yes**.To review the license terms and manually accept the license:
    - set the environment variable **IBM\_SPECTRUM\_MPI\_LICENSE\_ACCEPT=no**.
  - d. Use the **rpm-i** command to install the IBM Spectrum MPI product and license RPMs. By default, both product and license files will be installed to the **/opt/ibm/spectrum\_mpi** directory. This may be changed by providing an alternate installation directory to the **rpm-i** command with the **- - prefix** flag. If **- - prefix** is used, the same alternate location must be given for both the product and license RPMs.

**Note:** If you did not set the environment variable **IBM\_SPECTRUM\_MPI\_LICENSE\_ACCEPT=yes**, the license RPM installation will print the location of a license acceptance script that must be run to review and accept the license.

### More information



**Documentation:** To view the latest version of the documentation, go to the IBM Spectrum MPI Knowledge Center website.

